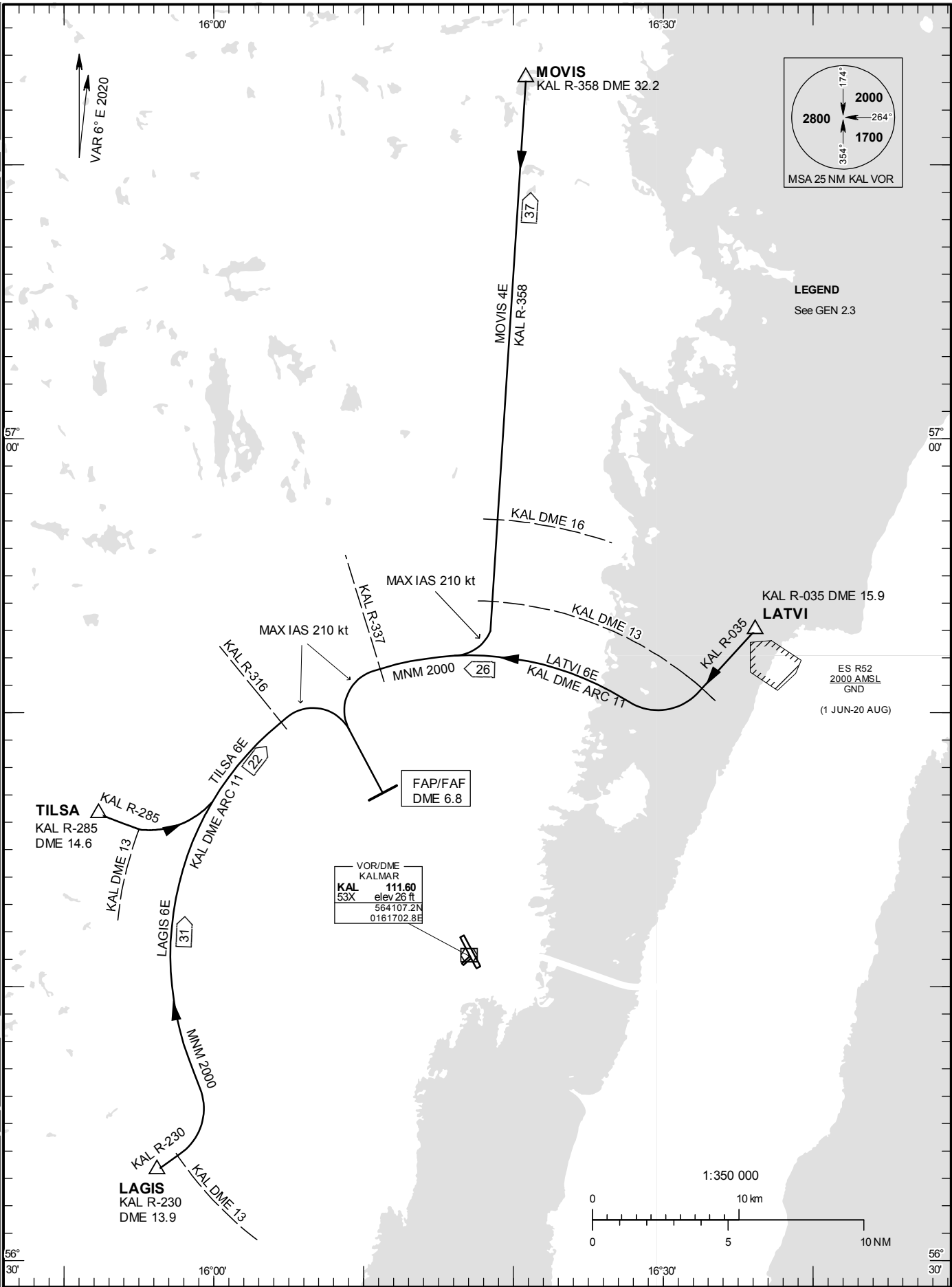


**STANDARD INSTRUMENT
ARRIVAL CHART (STAR) -
ICAO**

HGT and ALT in ft
BRG are MAG
TA 5000 ft AMSL

KALMAR TOWER 130.805



CHANGE: Editorial

KALMAR

ARRIVAL (STAR) RWY 16

REMARK

Descent to a minimum altitude for an arrival route must not be initiated until an air traffic control clearance to this altitude or an approach clearance has been received.

LAGIS SIX ECHO ARRIVAL (LAGIS 6E)

At LAGIS intercept KAL R-230 and proceed to KAL DME 13.
Turn left and proceed on KAL DME ARC 11 to KAL R-316.
Turn right (MAX IAS 210 kt) to intercept LOC MQ not below 2000 ft until FAP/FAF KAL DME 6.8.

LATVI SIX ECHO ARRIVAL (LATVI 6E)

At LATVI intercept KAL R-035 and proceed to KAL DME 13.
Turn right and proceed on KAL DME ARC 11 to KAL R-337.
Turn left (MAX IAS 210 kt) to intercept LOC MQ, not below 2000 ft until FAP/FAF KAL DME 6.8.

MOVIS FOUR ECHO ARRIVAL (MOVIS 4E)

At MOVIS intercept KAL R-358 and proceed to KAL DME 16, not below 5000 ft. Proceed to KAL DME 13. Turn right (MAX IAS 210 kt) and proceed on KAL DME ARC 11 to KAL R-337.
Turn left (MAX IAS 210 kt) to intercept LOC MQ, not below 2000 ft until FAP/FAF KAL DME 6.8.

TILSA SIX ECHO ARRIVAL (TILSA 6E)

At TILSA intercept KAL R-285 and proceed to KAL DME 13.
Turn left and proceed on KAL DME ARC 11 to KAL R-316.
Turn right (MAX IAS 210 kt) to intercept LOC MQ, not below 2000 ft until FAP/FAF KAL DME 6.8.